

Floorplan

This floorplan is only for illustrative purposes and is not to scale. Measurements of rooms, doors, windows, and any items are approximate and no responsibility is taken for any error, omission or mis-statement. Icons of items such as bathroom suites are representations only and may not look like the real items. Made with Made Snappy 360.

Directions

Contact

223 Southborough Lane
Bromley
Kent
BR2 8AT

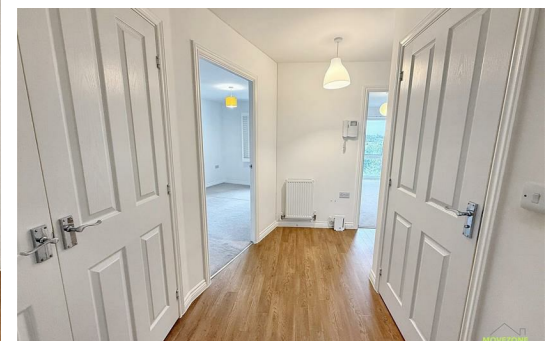
E: info@movezone.co.uk

T: 0208 3139075

<https://www.movezone.co.uk>

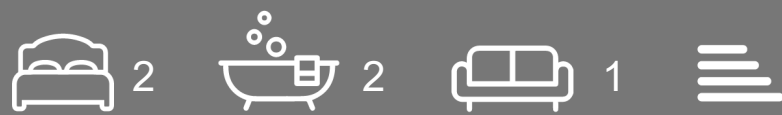


**2 Bed
Flat
located in 6 Homesdale Road**



53 Iconia House
6 Homesdale
Road
Bromley
BR2 0FS

£1,850 PCM



A fantastic opportunity to rent this spacious two bedroom, two bathroom balcony flat, ideally positioned within easy walking distance of Bromley South Station and the town centre. The property is superbly located with excellent transport links, along with a wide range of shops, restaurants and leisure facilities right on its doorstep.

Larger than average, the flat offers well proportioned accommodation throughout, including a bright open plan kitchen with appliances, a spacious living room with doors leading out to a private balcony overlooking the rear of the block, a master bedroom with built-in storage and an en-suite shower room, a second double bedroom, and a modern family bathroom with a bath. The property also benefits from an allocated parking space within a gated car park.

A particular highlight is the lovely balcony, providing a peaceful outdoor space to enjoy. This well-presented home is ideal for sharers, couples or a small family looking for generous space in a prime location.

EPC Rating: B
Council Tax Band: E
Contingency Deposit: £2134

Early viewing is highly recommended to appreciate the size, location and quality of this property.

